



## GUATEMALA



### ***National Committee for the Reduction of Disasters (Coordinadora Nacional para la Reduccion de Desastres – CONRED)***

Address :

**Avenida Hincapié, 21-72 Zona 13  
Guatemala  
Guatemala  
Tel : +502 2385 4144  
Fax: +502 2332 6635  
<http://www.conred.org>**

#### ***1. Legislation :***

The National Committee for the Reduction of Natural or Man-made Disasters (CONRED) is regulated by Law no.109-96 adopted by the Congress of the Republic and published on 12 December 1996 in the Diario de Centro América (Official Gazette).

#### ***2. Mission :***

CONRED concentrates all its efforts in establishing an adequate and permanent prevention and preparation policy which enables accidents and disasters of whatever nature to be faced and takes into account the progress and experience acquired in this field at the national and international levels.

CONRED's objectives are:

- to adopt, through inter-institutional coordination, mechanisms, methods and norms which facilitate disaster prevention on the national territory;
- to organise, train and supervise communities at the national, regional, departmental, municipal and local levels, to establish a policy for avoiding disasters and for intervening efficiently before, during and after their occurrence, and to create such organisation, training, information, dissemination or other programmes as necessary;
- to promote its organisation, policies and activities in public institutions so as to improve its inter-institutional coordinating capacity in matters related to disaster prevention and to encourage private bodies to pursue the same objectives;

- to develop emergency plans which take into consideration the occurrence and prevalence on the national territory of natural or man-made phenomena and their consequences;
- to develop, in collaboration with the responsible institutions, plans and strategies guaranteeing the recovery and quality of public services and vital communication networks in case of disasters;
- to encourage and contribute, as regards the limitation of the consequences of disasters, to the development of multi-disciplinary scientific, technical and operational study of threats, vulnerability and risks, in collaboration with recognised universities, institutions and experts;

To ensure the well-being and safety of individuals, the Executive Council may, on the basis of scientific and technical vulnerability and risk evaluations, designate as a high risk region any area of the country, unless published scientific and technical reports confirm that the threat of disaster or the disaster itself has receded.

### ***3. Regulation and procedure :***

Within the framework of their responsibilities for disaster prevention, CONRED, the National council, the Executive council, the Executive secretariat and the regional, departmental, municipal and local committees bodies are regulated before, during and after the occurrence of a disaster, by the relevant legal and regulatory texts which determine their activities, functions, attributions and duties.

### ***4. Organisation :***

CONRED is made up of the following bodies for disaster reduction:

- National council;
- Council and Executive secretariat;
- Regional committees;
- Departmental committees;
- Municipal committees;
- Local committees;

The highest organ of CONRED is the National Council which is made up of members of the public sector, independent entities, personalities from the private sector as well as a titular representative and a deputy, acting as honorary members for the following institutions:

- Ministry of defence, in charge of coordination;
- Ministry of public health and social security;
- Ministry of education;
- Ministry of public finance;
- Ministry of communications, transport, and public works;
- Ministry of interior;

- Council and Executive secretariat coordinators who attend the meetings but have no voting right;
- national fire brigade
- assembly of the presidents of vocational colleges;
- Coordinating committee of agricultural, commercial, industrial and financial associations.

Its Scientific council and executive secretariat comprises the Seismology, vulcanology, meteorology and hydrology Institutes - INSIVUMEH - each within their respective fields of action.

CONRED is structured on different levels corresponding to their territorial coverage:

- a) the national level, covering all the national territory, includes:
  1. the National council for disaster prevention;
  2. the council and executive secretariat for disaster prevention.
- b) the regional committees for disaster reduction bring together public and private organisations and regional citizens associations.
- c) the departmental committees for disaster reduction are composed of public and private organisations, citizens and first-aid workers' associations which intervene, in case of risk or disaster at the departmental level, in fields which are or may be related to activities foreseen by the law or by regulatory texts.
- d) the municipal committees include the municipal coordinating body for disaster reduction, which is composed of public and private organisations, citizens and first-aid workers' associations which are ready to intervene at all times within the scope of the law or regulatory texts.
- e) the local committees are made up of public and private organisations, local citizens and first-aid workers groups acting in accordance with the laws or texts regulating civil protection.

These committees are headed at each of the above levels by the civil servant holding the highest position in the corresponding territorial unit: regional director, departmental director, mayor and auxiliary mayor. They are regulated according to norms established by the Executive Secretariat and the Technical Council. To better fulfil their functions, they may nominate commissions or sub-commissions through the Executive Committee. Their work methods must in all cases be such as to facilitate integration and the forging of ties between the various components of CONRED.

### **5. Training :**

CONRED, as well as the other committees implement, each in their respective territorial areas of responsibility, simulation programmes to teach the population what it must do to protect or shelter itself in case of disasters of any nature.

It is evident that the inhabitants of regions which have been prone to a particular phenomenon or its variants must benefit from specific training.

This is particularly the case for areas which are periodically flooded at the onset or the end of the rainy season or areas subject to hurricanes, forest fires, volcanic eruptions, etc. The committees must train, within their respective jurisdictions, their own rescue bodies such as first-aid workers, firemen, etc. which are organised as required and follow training programmes supervised by CONRED as national coordinator.

All committees establish an inventory of the resources and means which could be used in their area in case of emergency.

CONRED makes recommendations and establishes a system for collecting all necessary data, through the council of the executive Secretariat.

All committees must formulate their training programmes according to the human resources and the means available to them and of the specifics of each locality. These programmes are copied to the Executive Secretariat and its technical council which controls and supervises them.

Members of committees at all levels must strive towards the accomplishment of the tasks incumbent upon them, before, during and after the occurrence of a disaster and thus contribute to the saving numerous lives.

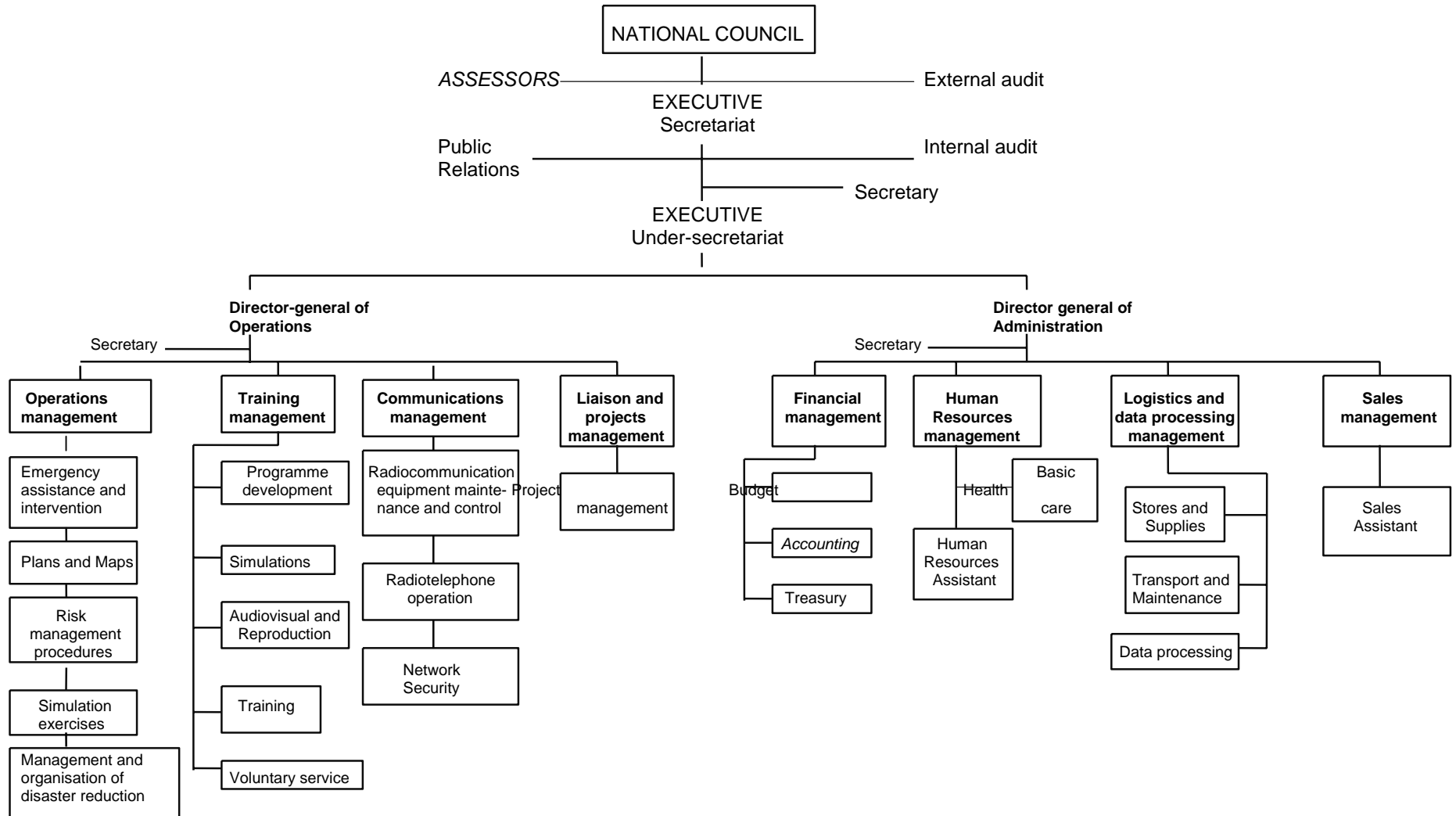
### ***6. Equipment/material :***

The CONRED has presently available 15 vehicles, 11 of which are over 10 years old. Steps are being taken to purchase office furniture and equipment notably computers.

### ***7. Finances :***

Of the present budget amounting to 7,000,000.00 quetzals, 60% is for personnel costs and the remaining 40% for vehicle maintenance, fuel and lubricants, telephones and fax, office supplies and disaster prevention.

# CONRED, GUATEMALA ORGANISATION CHART



**Mr. Hugo HERNÁNDEZ**

**Executive Secretary, CONRED**

[hhernandez@conred.org.gt](mailto:hhernandez@conred.org.gt)